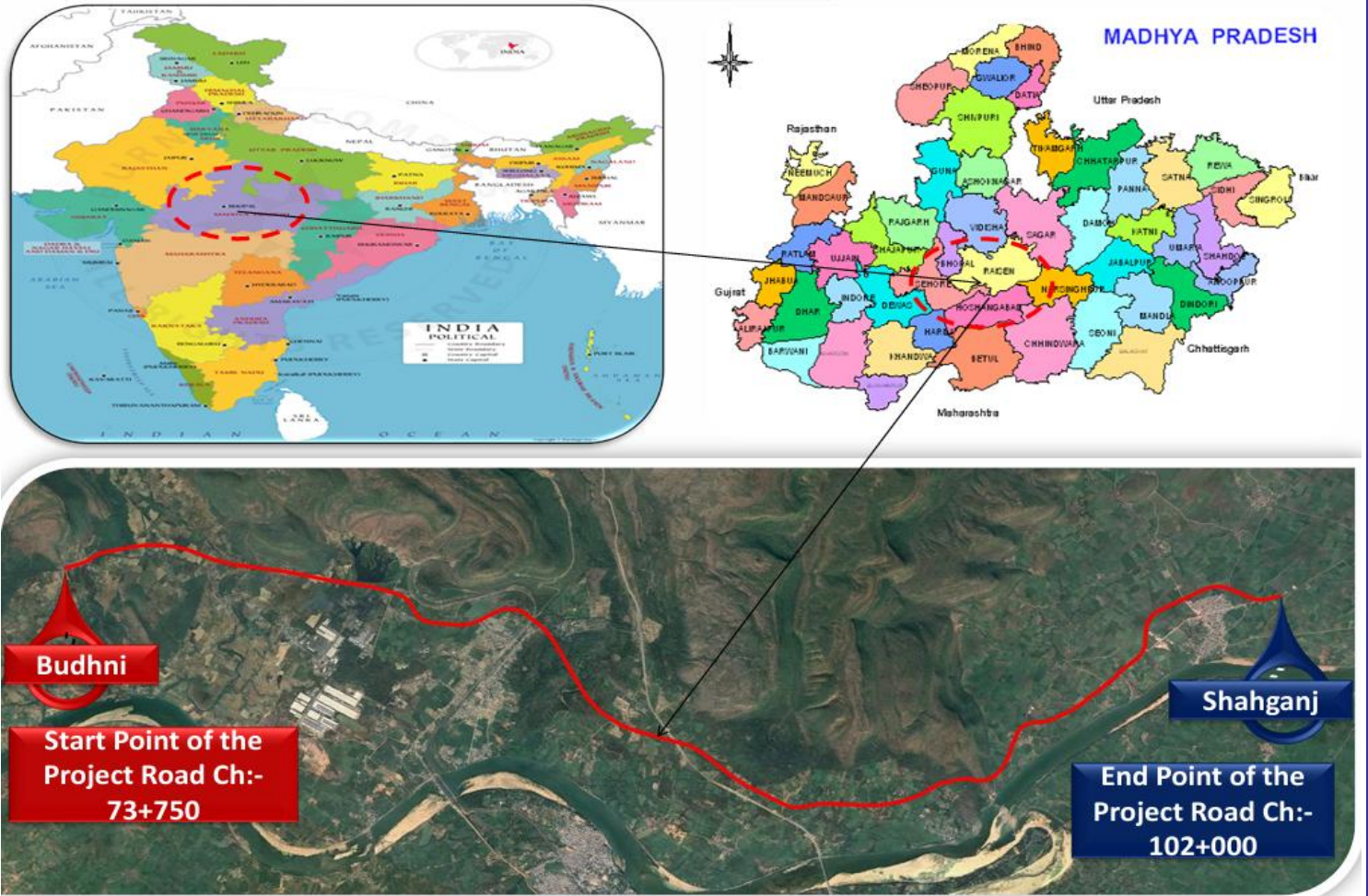


# BUDHNI SHAHGANJ HIGHWAYS PVT. LTD.

## MONTHLY PROGRESS REPORT

March-2026



NAME OF AUTHORITY : NATIONAL HIGHWAYS AUTHORITY OF INDIA

NAME OF CONCESSIONAIRE : BUDHNI SHAHGANJ HIGHWAYS PVT. LTD.

NAME OF EPC CONTRACTOR : MCC INFRATECH PVT. LTD.

NAME OF INDEPENDENT ENGINEER : SAPTAGON ASIA PVT. LTD.

**Construction work of 4-laning of Budhni to Shahganj bypass end (Package-III) of NH-146B from design km 73.750 to design km 102.000 (Design Length 28.250 km) under NH(O) in the State of Madhya Pradesh on Hybrid Annuity Mode.**

**MONTHLY PROGRESS REPORT - MARCH - 2026**

**Index**

Sr no.	Sections	Page No.		
		From	to	To
1	Executive Summary	1	to	1
2	Salient Features of Projects	2	to	2
3	Project Milestone	3	to	4
4	Location Map	5	to	5
5	Key Plan	6	to	6
6	Unresolved Issues/Constraints	7	to	8
7	Strip Plan (Summary)	9	to	9
8	Progress Status Structure	10	to	10
9	Physical Progress	11	to	13
10	Land Acquisition and clearances	14	to	14
11	Status of Utility Shifting	15	to	15
12	Mobilization Resources	16	to	19
13	Permissions and Approval	20	to	20
14	Drawing Status	21	to	21
15	Strip Chart	22	to	26
16	Safety and Health	27	to	27
17	Quality	28	to	37
18	Change of Scope	38	to	38
19	Accident Report	39	to	39
20	Photographs	40	to	46

# Executive Summary

## Construction progress in current month

### Summary of Progress:-

1. Total length of the Project as per CA 28.250 Km. but 29.390 Km. (After including incorporation of the Forest Portion realignment / COS Length) with Total Bid Project Cost 509 Cr. Appointed Date was 17.08.2025 and scheduled date of completion of construction is 16.08.2027 (with 730 days construction period). M/s Budhni Shahganj Highways Pvt. Ltd. started work at site.

### 2. LA Status/Handing Over of Length :-

Total 25.520 Km. Handed Over and 3.870 km Balance due to hindrance.

Key Reporting Metrics	Value%/Amount
<b>A- Physical Progress</b>	
Cumulative Physical Progress upto current month (%)	12.93%
Cumulative Financial Progress upto current month (%)	12.44%
Current Month Financial Progress (%)	2.03%
Cumulative Expenditure till date (Rs Cr) as per Construction cost @ 509 Cr.	63.29
Tests passed as % of total tests witnessed by IE	15.51%

## Project Overview

### Salient Features of Project

<b>Project Name</b>	Construction work of 4-laning of Budhni to Shahganj bypass end (Package-III) of NH-146B from design km 73.750 to design km 102.000 (Design Length 28.250 km) under NH(O) in the State of Madhya Pradesh on Hybrid Annuity Mode.
<b>NH No. (New/ Old)</b>	146B
<b>Mode of the Execution</b> (BOT Toll/ BOT Annuity/ EPC/ HAM/ Item Rate/ Others)	Hybrid Annuity Mode
<b>No. of Lanes/ Configuration</b>	Four Lane with Paved Shoulder
<b>Length of the Project (in Km)</b>	28.250 Km.
<b>Total Project Cost/ Civil Construction Cost/ Contract cost (in Cr)</b>	Rs. 509
<b>Total EPC Cost (in Cr)</b>	Rs. 509
<b>No. of Bypasses</b> (Name of Town, Length)	19.890 Km (Budhni 16.440 Km + Shahganj 3.450 Km)
<b>No. of Major Bridges</b> (Number and Location)	04 Nos (Chainages - 77+460, 85+320, 88+500 & 96+225)
<b>No. of Toll Plazas</b> (Number and Location)	Nil
<b>DPR Consultant Name</b>	M/s Lion Engineering Consultants
<b>Contractor Name</b> (SPV & Parent Company)	M/s MCC Infratech Pvt. Ltd.
<b>Date of Award</b> (LOA Date)	16 <sup>th</sup> March 2024
<b>Appointed Date</b>	17 <sup>th</sup> August 2025
<b>Construction Period</b> (in Days)	(730 Days)
<b>Scheduled Date of Completion</b>	16 <sup>th</sup> August 2027
<b>Independent Engineer</b>	M/s Saptagon Asia Pvt. Ltd.

## Project Milestones

Project Milestone	Date	Physical Progress for achievement (%)	Date as per Approved EOT	Status	Remarks
Appointed Date	17-08-2025	Nil			
Milestone I	12-02-2026	20%		12.44%	
Milestone II	16-08-2026	35%			
Milestone III	17-02-2027	75%			
Scheduled Completion	16-08-2027	100%			

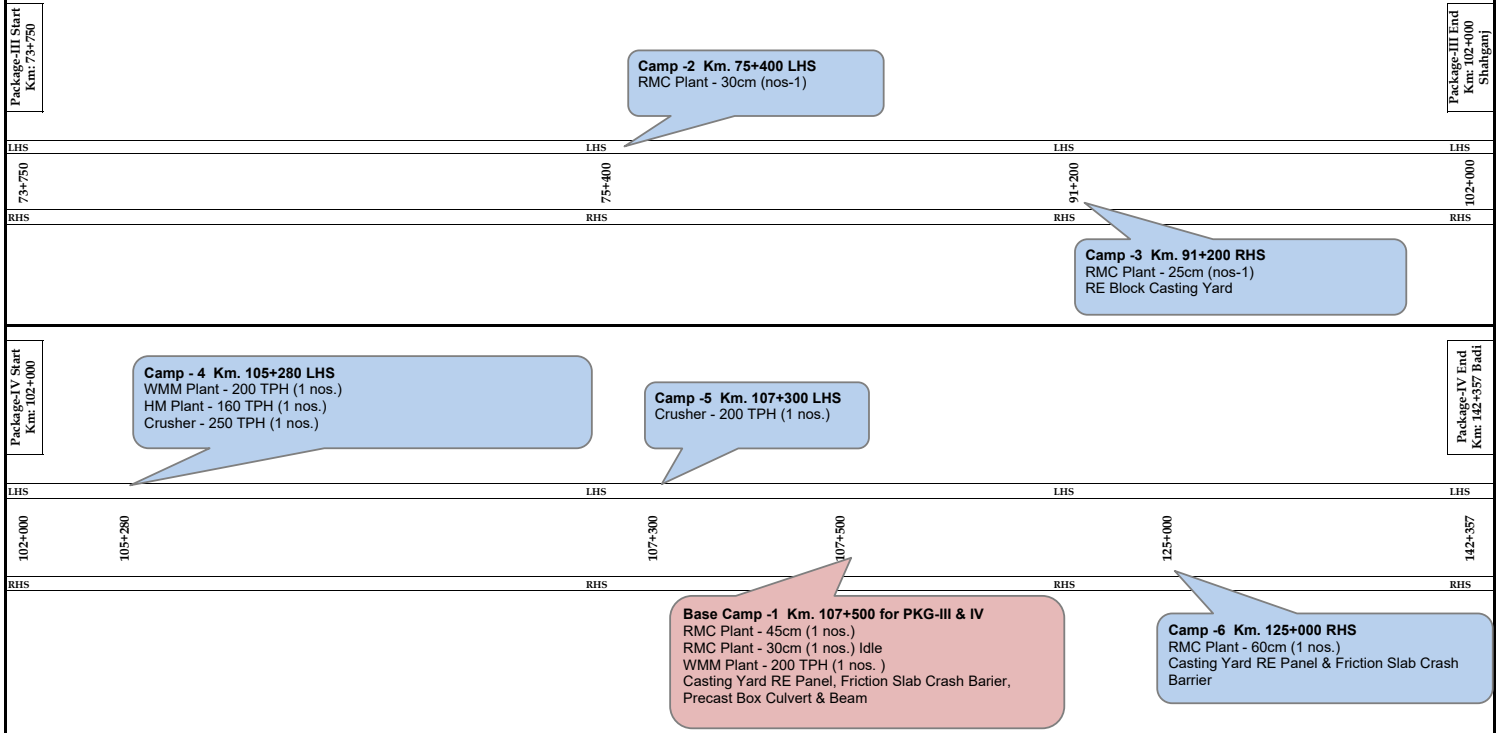
## Payment Milestones

Sr. No.	Payment Milestone	Status	Remarks
I	On achievement of 5% of Physical Progress	Achieved	MPC-1 on achievement of 5% is submitted vide letter no. BSHPL/NHAI/FY25-26/290□
II	On achievement of 10% of Physical Progress	Achieved	MPC-2 on achievement of 10% is submitted vide letter no. BSHPL/NHAI/FY25-26/321□
III	On achievement of 20% of Physical Progress		
IV	On achievement of 30% of Physical Progress		
V	On achievement of 40% of Physical Progress		
VI	On achievement of 50% of Physical Progress		
VII	On achievement of 60% of Physical Progress		
VIII	On achievement of 70% of Physical Progress		
IX	On achievement of 80% of Physical Progress		
X	On achievement of 90% of Physical Progress		

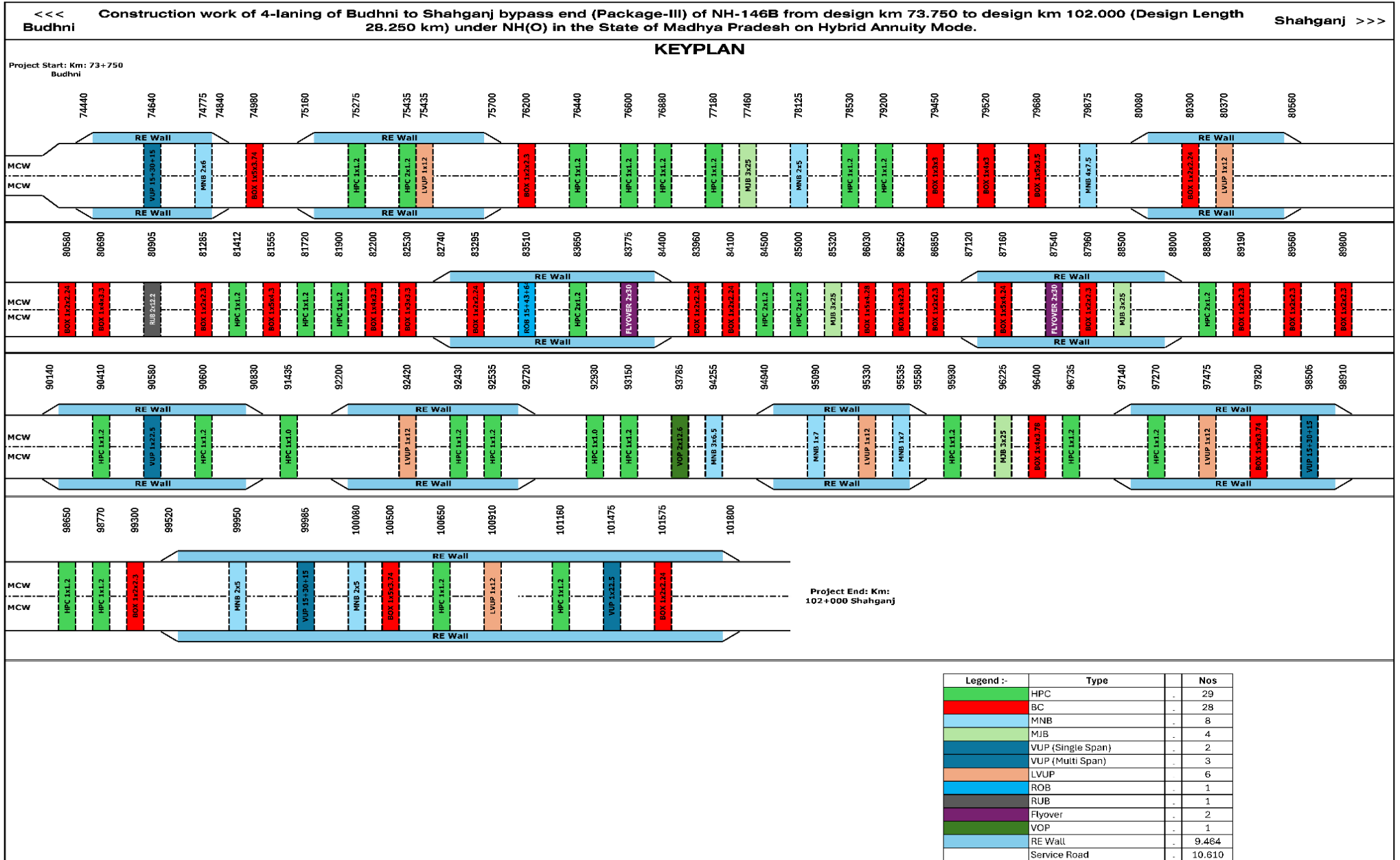
**Camp Location Map**



**CAMP LOCATION PLAN**



# Key Plan



# UNRESOLVED ISSUES/CONSTRIANTS

Sr. No.	Activity	Constraints	Remarks
<b>1</b>	<b>Land Acquisition</b>		
	A. Acquisition	Land possession work is in progerss as per the instruction of NHAI Officials	
	B. Encroachment	Dismantling of structure time to time is being carried out as per the instruction of NHAI Officials	
<b>2</b>	<b>Utility Shifting</b>		
	A. Electrical Utility Shifting	Electrical Lines - 37 Nos. Crossing -72 & Transformers - 14 Nos.	Estimates are approved. Work in Progress
	B. PHED Utility Shifting	09 Nos.	Estimates are approved. Work in Progress

**Construction work of 4-laning of Budhni to Shahganj bypass end (Package-III) of NH-146B from design km 73.750 to design km 102.000 (Design Length 28.250 km) under NH(O) in the State of Madhya Pradesh on Hybrid Annuity Mode.**

**Hindrance Status**

Sr no.	Chainage		Affected Length	Side	Description
	From	To	(Meter)		
1	73+750	74+600	850	BHS	Holipura Village & Structures
2	75+020	75+120	100	LHS	RoW Constraints
3	75+940	76+220	280	BHS	Court case
4	82+350	82+500	150	BHS	Sewerage line & Temple
5	86+420	86+500	80	LHS	Payment pending Forest realignment
6	88+800	88+900	100	BHS	Villagers Issue
7	92+430	92+450	20	RHS	Network Tower Shifting Pending at Km 92+440
8	92+650	92+900	250	LHS	RoW Constraints due to Villagers
9	95+090	95+110	20	RHS	Network Tower Shifting Pending at Km 95+100
10	95+250	95+350	100	LHS	Village Structure Dismantling Balance
11	95+600	96+400	800	BHS	RoW Constraints due to Villagers
12	97+250	97+300	50	RHS	Payment pending
13	97+980	98+150	170	LHS	RoW Constraints due to Villagers
14	101+100	101+400	300	BHS	RoW Constraints due to Villagers
15	101+400	101+500	100	BHS	Decision Pending (VIP Demand to Deletion of VUP at Km 101+475)
16	101+500	102+000	500	BHS	Payment pending
<b>Total Length &gt;&gt;&gt;&gt;</b>			<b>3870 Mtr</b>		

## Strip Plan (Summary)

1. Land Acquisition Status			2. Length Completed by layer (MCW)			3. Length Completed by Layer (Service Road+ Slip Road)		
Description	Length / Area	% Total Pending Length/Area	Description	Length in (KM)	% Total Length	Description	Length in (KM) Both Sides	% Total Length
Total Length Km.	29.390		Total Length	54.706		Total Length	21.230	
Total Workfornt Unavailable Km. due to LAQ/Encroachment	26.810	91.22%	Total Length Completed	0.000	0.00%	Total Length Completed	-	0.00%
Pending Land Ha.	11.39185437		BC	0.000	0.00%	BC	-	0.00%
			DBM	1.970	3.60%	DBM	-	0.00%
Acq. Ha.	118.3781456	91.22%	WMM With Geogrid	6.020	11.00%	AIL	-	0.00%
			CTSB	11.590	21.19%	CTSB	-	0.00%
			Sub-Grade	14.881	27.20%	Sub-Grade	1.240	5.84%

## Progress Status of Structure

DESCRIPTION	SCOPE OF WORK	WORK STATUS				REMARKS
		COMPLETED	IN PROGRESS	TOTAL TAKEN UP	BAL TO TAKEUP	
Pipe Culvert	29	16	8	24	5	
Box Culvert	28	6	15	21	7	
LVUP	6	4	2	6		
VUP	5		4	4	1	
VOP	1				1	
MNB	8		7	7	1	
MJB	4		2	2	2	
FLYOVER	2		1	1	1	
RUB	1				1	
ROB	1				1	
RE Wall	14		3	3	11	
<b>TOTAL</b>	<b>99</b>	<b>26</b>	<b>42</b>	<b>68</b>	<b>31</b>	

**Construction work of 4-laning of Budhni to Shahganj bypass end (Package-III) of NH-146B from design km 73.750 to design km 102.000 (Design Length 28.250 km) under NH(O) in the State of Madhya Pradesh on Hybrid Annuity Mode.**

**Physical Progress Report Up to March-2026**

Item	Stage for Measurement of Physical Progress	Unit	Qty.	Weightage in percentage to the Contract Price	Total Upto Date	
					Completed Qty.	Physical Progress % Age
<b>Road works including Culverts, Minor Bridges, Underpass, Overpass Approaches to ROB/RUB/ Major Bridges/Structures (But excluding Service Road)</b>	<b>A- Widening and Strengthening of Existing Road</b>					
	(1) Earthwork up to top of the Subgrade	Km.	12.548	1.027%	2.850	0.233%
	(2) Granular Work (Sub-Base, Shoulders)					
	(a) CTSB	Km.	12.548	0.699%	2.430	0.135%
	(b) WMM With Geogrid	Km.	12.548	1.082%	2.310	0.199%
	(3) Shoulder	Km.	8.140	0.014%	-	
	<b>(4) Bituminous works</b>					
	(a) DBM	Km.	12.548	0.953%	0.530	0.040%
	(b) BC	Km.	12.620	0.703%	-	
	<b>B- New realignment/Bypass</b>					
	(1) Earthwork up to top of the Subgrade	Km.	42.158	6.438%	12.031	1.837%
	(2) Granular Work (Sub-Base, Shoulders)					
	(a) CTSB	Km.	42.158	2.497%	9.160	0.542%
	(b) WMM With Geogrid	Km.	42.158	3.749%	3.710	0.330%
	(3) Shoulder	Km.	28.640	0.050%	-	
	<b>(4) Bituminous works</b>	Km.				
(a) DBM	Km.	42.158	3.300%	1.440	0.113%	
(b) BC	Km.	43.880	2.435%	-		
<b>(1) Widening and Strengthening of Existing Road &amp; New realignment/Bypass</b>	<b>C- New Culverts, Minor Bridges, Underpasses, Overpasses on existing road, realignments, bypasses:</b>					
	(1) Culverts	Nos.	57	2.490%	37.000	1.616%
	<b>(2) Minor Bridges</b>					
	a) Foundation	Nos.	28	0.994%	18.000	0.639%
	b) Sub-structure	Nos.	28	0.714%	9.000	0.230%
	c) Super-structure (including crash barriers etc complete)	Nos.	28	0.750%	9.000	0.241%
	<b>(3) Cattle/Pedestrian Underpass</b>					
	a) Foundation	Nos.				
	b) Sub-structure	Nos.				
	c) Super-structure (including crash barriers etc complete)	Nos.				
	<b>(4) Pedestrian Overpasses</b>					
	a) Foundation	Nos.				
	b) Sub-structure	Nos.				
	c) Super-structure (including crash barriers etc complete)	Nos.				
	<b>(5) Grade Separated Structures</b>					
	<b>(A) Underpass (VUP/LVUP)</b>					
	a) Foundation	Nos.	44	0.823%	34.000	0.636%
	b) Sub-structure	Nos.	57	0.597%	24.000	0.251%
	(c) Super-Structure <b>LVUP &amp; VOP</b> (including Crash Barrier etc. Complete)	Nos.	14	1.229%	12.000	1.053%
	c) Super-structure <b>VUP</b> (including crash barriers etc complete)					
	A. On Casting (40%)	Nos.	65	0.074%	27.000	0.031%
	B. On Erection (60%)	Nos.	21	0.111%	-	
	<b>(B) Overpass</b>					
	a) Foundation	Nos.				
	b) Sub-structure	Nos.				
	c) Super-structure (including crash barriers etc complete)	Nos.				
	<b>(C) Flyover</b>					
	a) Foundation	Nos.	12	0.213%	4.000	0.071%
	b) Sub-structure	Nos.	12	0.232%	-	
	c) Super-structure (including crash barriers etc complete)	Nos.				
	(a) On Casting	Nos.	24	0.359%	-	
	(b) On Erection	Nos.	8	0.538%	-	
<b>(D) Foot Over bridge</b>	Nos.					

**Construction work of 4-laning of Budhni to Shahganj bypass end (Package-III) of NH-146B from design km 73.750 to design km 102.000 (Design Length 28.250 km) under NH(O) in the State of Madhya Pradesh on Hybrid Annuity Mode.**

**Physical Progress Report Up to March-2026**

Item	Stage for Measurement of Physical Progress	Unit	Qty.	Weightage in percentage to the Contract Price	Total Upto Date	
					Completed Qty.	Physical Progress
<b>Major Bridge works and ROB/RUB</b>	<b>A- Widening and Repair of Major Bridges</b>					
	(1) Foundation	Nos.				
	(2) Sub-Structure	Nos.				
	(3) Super-structure (including crash barriers etc complete)	Nos.				
	<b>B- Widening and Repair of ROB/RUB</b>					
	<b>(a) ROB</b>					
	(1) Foundation	Nos.				
	(2) Sub-Structure	Nos.				
	(3) Super-structure (including crash barriers etc complete)	Nos.				
	<b>(b) RUB</b>					
	(1) Foundation	Nos.				
	(2) Sub-Structure	Nos.				
	(3) Super-structure (including crash barriers etc complete)	Nos.				
	<b>C- New Major Bridges</b>					
	<b>(1) Foundation</b>					
	(a) Open Foundation	Nos.	32	0.696%	6.000	0.131%
	(b) Pile Foundation/Well Foundation	Nos.				
	<b>(2) Sub-structure</b>					
	(3) Super-structure (including crash barriers etc complete)	Nos.	32	0.786%	-	
	(a) On Casting	Nos.	96	0.674%	18.000	0.126%
	(b) On Erection	Nos.	24	1.010%	-	
	<b>D- New Rail Road Bridges</b>					
	<b>(a) ROB</b>					
(1) Foundation	Nos.	12	0.557%	-		
(2) Sub-structure	Nos.	12	0.897%	-		
(3) Super-structure (including crash barriers etc complete)						
A. On Casting (40%)	Nos.	42	1.864%	8.000	0.355%	
B. On Erection (60%)	Nos.	10	2.796%	-		
<b>(b) RUB</b>						
(1) Foundation	Nos.	2	1.008%	-		
(2) Sub-structure	Nos.	3	0.567%	-		
(3) Super-structure (including crash barriers etc complete)	Nos.	2	1.075%	-		
<b>Structures (Elevated Section, Reinforced earth)</b>	(1) Foundation	Nos.				
	(2) Sub-structure	Nos.				
	(3) Super-structure (including crash barriers etc complete)	Nos.				
	(4) Reinforced Earth Wall (Erection, Including approaches of ROB, Underpasses, Overpass, Flyover etc)	Sqm				
	(a) On Casting	Sqm	82754	1.345%	45,214.105	0.735%
	(b) On Erection	Sqm	82754	25.550%	2,933.449	0.906%
<b>Electrical and Public Health Utilities</b>	(a) EHT line	Km.				
	(a) EHT crossings	No.	6.000	2.685%	-	
	(b) HT/LT lines (including Transformers if any)	Km	15.050	0.864%	5.870	0.337%
	(c) HT/LT crossings	No.	66.000	0.622%	5.000	0.047%
	(d) Water Pipeline	Km	0.900	0.133%	-	
	(f) Water Pipeline Crossings	No.	3.000	0.074%	-	
	(g) Sewage Line	Km				
	(h) Sewage Line Crossings	No.				

**Construction work of 4-laning of Budhni to Shahganj bypass end (Package-III) of NH-146B from design km 73.750 to design km 102.000 (Design Length 28.250 km) under NH(O) in the State of Madhya Pradesh on Hybrid Annuity Mode.**

**Physical Progress Report Up to March-2026**

Item	Stage for Measurement of Physical Progress	Unit	Qty.	Weightage in percentage to the Contract Price	Total Upto Date	
					Completed Qty.	Physical Progress
<b>Other Works</b>	<b>(i) Service Roads/Slip Roads</b>					
	(1) Earth Work Up to BC Top	Km.	21.230	3.549%	-	
	(2) Granular Work (Sub-Base)					
	(a) CTSB	Km.				
	(b) WMM With Geogrid	Km.				
	(3) Shoulders					
	<b>(4) Bituminous works</b>					
	(c) DBM	Km.				
	(d) BC	Km.				
	<b>(ii) Toll Plaza</b>					
	(a) Toll Plaza Works	Nos.				
	(b) Construction of Administrative Buildings					
	<b>(iii) Road Side Drains</b>	Km.	25.610	3.479%	1.280	0.174%
	<b>(iv) Road signs, markings, Km. Stones, Safety Devices etc.</b>					
	(a) Road signs, markings, Km. Stones, etc.	Km.	28.250	0.915%	-	
	(b) Concrete Crash Barrier/W-beam Crash Barrier in Road works	Km.	31.142	3.016%	-	
	<b>(v) Project Facilities</b>					
	(a) Bus Bays/ Shelters	Nos.				
	(b) Truck Lay Bys	Nos.	1.000	0.008%	-	
	(c) Rest Areas	Nos.	1.000	0.014%	-	
	(d) Operation & Maintenance	Nos.	1.000	0.110%	-	
	<b>vii) Road Side Plantation</b>	Km.	27.317	0.215%	-	
	<b>viii) Avenue Plantation</b>	Km.	27.317	0.223%	-	
	<b>(ix) Protection works</b>					
	a) Boulders pitching on slopes	Km.				
	b) Toe/Retaining wall	Km.	18.370	10.435%	2.468	1.402%
	<b>(x) Tunnel</b>	Km.				
	a) Excavation	Meter				
	b) Construction of support system including rock bolting, lining etc.	Meter				
	c) On Completion of Tunnel	Meter				
<b>(xi) Miscellaneous</b>						
(a) Rain Water Harvesting (At Every 2 Km within ROW)	Nos.	14.00	0.023%	-		
(b) Highway Lightning	Nos.	531.83	0.377%	-		
(d) Boundary wall/Chain Link Fencing	km	54.71	1.687%	-		
(e) Culverts on Cross Road	Nos.	26.00	0.248%	-		
(f) Utility Pipe 600 Dia	Nos.	57.00	0.079%	17.500	0.024%	
(g) Bus Shelter	Nos.	12.00	0.028%	-		
(h) Junctions	Nos.	27.00	0.289%	-		
(i) Unlined Drain	mtr.	29096	0.031%	-		
			<b>100%</b>		<b>12.44%</b>	

**Land Acquisition and Clearances**  
**LA Summary**

S.No	Particulars	Area of Land in HA.	Remarks
A	Total Land to be Acquire	148.770	
B	Existing Land	19.000	
C	Additional Land Required (C=A-B)	129.770	
D	Forest Land	32.300	
E	Total 3G Award	129.770	
F	Total 3H	118.378	91.222%
G	Balance (G=E-F)	11.392	8.778%
H	Length Available for working (KM)	26.810	

**Status of Utility Shifting**

**A - ELECTRICAL UTILITY (MPMKVVCL)**

Sr. No.	Description	Total Estimates	Total Estimates Submitted to Authority	Total Estimates Approved from Authority	Total Length Affected	Work Status	Remarks
		(Nos)	(Nos)	(Nos)	(KM.)		
1	33 KVA	11	11	0	3.45	1 Km. Wire Installation completed and balance work in progress. 2 Km. Pole Erection completed and balance work in progress.	Estimates are Approved. Supervision Charges Deposited to Owning Department by Authority.
2	11 KV	18	18	0	9.45	6 Km. Wire Installation completed and balance work in progress. 3 Km. Pole Erection completed and balance work in progress.	
3	LT Line	8	8	0	2.15	Pole Erection in progress.	
4	EHT 766 KVA Crossing	3					
5	EHT 220 KVA Crossing	1					
6	EHT 132 KVA Crossing	2					
7	33 KVA Crossing	9	9	0			
8	11 KV Crossing	39	39	0		5 nos. crossings complete	
9	LT Line Crossing	18	18	0			
10	Transformers	14	64	0			

**B - WATER SUPPLY/SEWERAGE LINE (PHED)**

1	Water Supply Pipe line	3	3	0		Work in progress	Estimates are Approved.
---	------------------------	---	---	---	--	------------------	-------------------------

**C-TREE CUTTING STATUS (REVENUE & FOREST)**

Sr no.	Description	Total Scope	Total Cut	Total Balance to be Cut	Remark
		No.	No.	No.	
1	Trees	3855	3740	115	Permission obtained from the Concern Department and Tree cutting is in progress.
<b>Total</b>		<b>3855</b>	<b>3740</b>	<b>115</b>	

# Mobilization of Resources

Sr no.	Equipment Name	Make	Model	Quantity	Deployment Year	Remarks
1	RMC PLANT	CONMAT	CP-30	1	2025	
2	RMC PLANT	CONMAT	CP-25	1	2025	
3	RMC PLANT	CONMAT	CP-60	1	2025	
4	CTB PLANT	APOLLO	APOLLO 200 TPH	1	2025	
5	CRUSHER PLANT	METSO	METSO 250 TPH	1	2025	
6	CRUSHER PLANT	TEREX	TEREX 200 TPH	1	2025	
7	WMM Paver	VOLVO	Paver 5.0 Mtr	1	2025	
8	DBM Paver	Vogele	Paver 9.3 Mtr	1	2025	
9	DG Set 125 KVA	Mahindra	125 KVA	2	2025	
10	DG Set 200 KVA	SUDHIR CUMMINS	200 KVA	1	2025	
11	DG Set 500 KVA	CAT	500 KVA	2	2025	
12	DG Set 30 KVA	SUDHIR CUMMINS	30 KVA	5	2025	
13	DG Set 20 KVA	SUDHIR CUMMINS	20 KVA	5	2025	
14	Light Mast	CUMMINS	KG1-5AS3/5KVA	1	2025	
15	Hydraulic Broomer	BROOMER HYDRAULIC	ALLWIN	1	2025	
16	Soil Compactor	VOLVO	SD110	1	2025	
17	Soil Compactor	JCB	VM116	1	2025	
18	Soil Compactor	CASE	CASE 1107 EX	1	2025	
19	Baby Roller	CASE		1	2025	
20	Baby Roller	JCB		3	2025	
21	Tandem Roller	HAMM		1	2025	
22	Motor Grader	CAT	CATERPILLAR 120K2 SERIES 2	9	2025	
23	Motor Grader	CASE	CASE 845 B MOTER GRADER	2	2025	
24	Excavator	KOBELCO		2	2025	
25	Excavator	Volvo		2	2025	
26	Excavator	TATA		1	2025	
27	Excavator	CAT		2	2025	
28	Wheel Loader	JCB	4374 & JCB INDIA	4	2025	
29	Dozer	CASE		1	2025	
30	Dozer	CAT		4	2025	
31	Hydra	ESCORT	TRX 1549 XT & ESCORT	3	2025	
32	Hyd. Crane	SANY	SANY	1	2025	
33	Trailer	BHARATBENZ	BHARATBENZ 3123R 8X2 BSIV	1	2025	
34	Trailer	TATA	LPS4018TC/32	2	2025	
35	Diesel Tanker	TATA	TATA SPC 709EX/38 BSIV	1	2025	
36	Diesel Tanker	Mahindra	BOLERO SC XL CBC 2WD	1	2025	
37	Boom Pressor	TATA	SIGNA 2823 K BS VI, 56WHD	1	2025	
38	Concrete Pump	SCHWING Stetter	DP-350	1	2025	
39	Tipper	TATA	LPK 2518 TC/38	12	2025	
40	Water Tanker	TATA	LPK 2518 TC/38	5	2025	
41	Transit Mixer	TATA	TRUXO BS-III	1	2025	
42	Backhoe Loader	JCB	JCB 3DX XTRA	3	2025	
43	Backhoe Loader	CAT	BACKHOE LOADER 2WD	1	2025	
44	LMV	Mahindra	SCORPIO S10 2.2	2	2025	
45	LMV	Mahindra	BOLERO	5	2025	
46	LMV	Toyota	FORTUNER	2	2025	
47	LMV	Mahindra	MAHINDRA BOLERO CAMPER	8	2025	

Note: - Additional machinery shall be mobilised at site as per progress requirements.

# Mobilization of Resources

SR NO.	EMPLOYEES NAME	DESIGNATION	DEPARTMENT	REMARKS
<b>A - Key Person</b>				
1	Avinash Kumar	General Manager	Management	
2	Manoj Kumar	Project Head	Management	
3	Vikrant Tyagi	Project Manager	Management	
<b>B - Planning &amp; Billing</b>				
1	Pradeep Singh	Q S Manager	Planning & Billing	
2	Nitesh Yadav	Asst. Manager Billing	Planning & Billing	
3	Deepak	Asst. QS	Planning & Billing	
4	Abhishek Kumar	Jr . Engg Billing	Planning & Billing	
5	Shah Alam	Engg Billing	Planning & Billing	
<b>C - Highway</b>				
1	Vijay Kant	Dpm Highway	Highway	
2	Vagish Kumar	Highway Manager	Highway	
3	Sohan Chahal	Sr Engineer Highway	Highway	
4	Shiv Shankar Awasthi	Sr . Forman Highway	Highway	
5	Sanoj Kumar	Engineer Highway	Highway	
6	Praveen Kumar Singh	Supervisor	Highway	
7	Jodha Ram	Supervisor	Highway	
<b>D - Structure</b>				
1	Narayan Ram Patel	Dpm Structure	Structure	
2	Deepak Kumar Dubey	Asst. Structure Manager	Structure	
3	Niten Laha	Engg Str	Structure	
4	Mahesh Patel	Sr Engg Str	Structure	
5	Subhabrata Bera	Sr Engg Str	Structure	
6	Kundan Kumar Jha	Engg Str	Structure	
7	Susheel Kumar	Engg Str	Structure	
8	Lalit Kumar Sharma	Engg Str	Structure	
9	Rajan Kumar Singh	Foreman	Structure	
10	Chandan Kumar Singh	Sr Engg Str	Structure	
<b>E - QA/QC</b>				
1	Anurag Kumar	Sr . QC Engineer	QA/QC	
2	Tarun Prakash Shukla	Jr . Engg QA / QC	QA/QC	
3	Santosh Kumar Gupta	Lab Technician	QA/QC	
4	Ramesh Mirdha	Lab Technician	QA/QC	
5	Naman Pratap Singh	Lab Technician	QA/QC	
6	Anup Kumar Singh	Lab Technician	QA/QC	
7	Gulshan Kumar	Lab Helper	QA/QC	
8	Abhishek Kumar Maurya	Lab Helper	QA/QC	
9	Aklesh	Lab Helper	QA/QC	
10	Mahesh Kumar Shukla	Lab Helper	QA/QC	
11	Bharat Singh Marko	Lab Helper	QA/QC	
12	Teerath Singh Maravi	Lab Helper	QA/QC	
13	Karan	Lab Helper	QA/QC	
14	Mohit Sahu	Lab Helper	QA/QC	
15	Sonu Kumar	Lab Helper	QA/QC	
<b>F - Survey</b>				
1	Atul Sharma	Ts Opretor	Survey	
2	Raju Ram Choudhary	Surveyor	Survey	
3	Chain Roop Sharma	Surveyor	Survey	
4	Raj Kumar	Surveyor	Survey	
5	Jitendra	Surveyor	Survey	
6	Mahendra Jakhar	Surveyor	Survey	
7	Dinesh Bhichar	Surveyor	Survey	
8	Poora Ram	Surveyor	Survey	
9	Jagdish Choudhary	Surveyor	Survey	
10	Avanish Kumar	Surveyor	Survey	
11	Ashu	Surveyor	Survey	
12	Shivam Pandey	Deo Survey	Survey	
13	Bhagirath Nayal	Survey Helper	Survey	

SR NO.	EMPLOYEES NAME	DESIGNATION	DEPARTMENT	REMARKS
14	Narender	T S Survey Helper	Survey	
15	Satish Chand	T S Survey Helper	Survey	
<b>G -Legal &amp; Liaison</b>				
1	Puneet Kumar Dubey	Agm	Legal & Liaison	
<b>H -HR/Admin</b>				
1	Anupam Singh	Manager	Hr/ Admin	
<b>I -Accounts</b>				
1	Gunesh Ram Vishnoi	Accountant	Accounts	
2	Asheesh Singh Bhadouria	Accountant	Accounts	
<b>J - Safety</b>				
1	To Be Appoint	Manager	Safety	
<b>K - Utility Shifting</b>				
1	Gopal Lal Dhabhai	Engineer	Utility Shifting	
<b>L - Store/Purchase</b>				
1	Abhishek Singh	Store Manager	Store	
2	Naresh Panday	Store Incharge	Store	
3	Prithvi Raj Singh	Store Incharge	Store	
4	Luna Ram	Deo Store	Store	
5	Dinesh	Store Purchase	Store	
6	Jitendra Choudhary	Store Keeper	Store	
7	Babu Ram	Diesel Supervisor	Store	
8	Vikash	Diesel Billing Store	Store	
9	Babu Ram	Supervisor ( Flyash )	Store	
10	Yuvraj Singh	Supervisor ( Flyash )	Store	
<b>M - Plant &amp; Machinery</b>				
1	Shailendra Kumar Upadhyay	Sr Engg Plant & Machinery	Plant & Machinery	
2	Murlidhar	Hod P&M	Plant & Machinery	
3	Sunil Kumar Patel	Sr Engg P & M	Plant & Machinery	
4	Hm Plant Operator	01 Nos	Plant & Machinery	
5	Hm Plant Astt Operator	02 Nos	Plant & Machinery	
6	Hm Plant Helper	01 Nos	Plant & Machinery	
7	CTB Plant Operator	01 Nos	Plant & Machinery	
8	CTB Plant Helper	02 Nos	Plant & Machinery	
9	Rmc Plant Operator	04 Nos	Plant & Machinery	
10	Rmc Plant Helper	01 Nos	Plant & Machinery	
11	DBM Paver Operator	01 Nos	Plant & Machinery	
12	DBM Paver Helper	01 Nos	Plant & Machinery	
13	Excavator Operator	18 Nos	Plant & Machinery	
14	Excavator Helper	06 Nos	Plant & Machinery	
15	Grader Operator	12 Nos	Plant & Machinery	
16	Grader Helper	02 Nos	Plant & Machinery	
17	JCB Operator	06 Nos	Plant & Machinery	
18	Roller Operator	11 Nos	Plant & Machinery	
19	Dozer Operator	04 Nos	Plant & Machinery	
20	Loader Operator	04 Nos	Plant & Machinery	
21	Loader Helper	01 Nos	Plant & Machinery	
22	Concrete Pump Operator	02 Nos	Plant & Machinery	
23	Tm Operator	14 Nos	Plant & Machinery	
24	Tm Helper	06 Nos	Plant & Machinery	
25	Crane Operator	01 Nos	Plant & Machinery	
26	Crane Helper	03 Nos	Plant & Machinery	
27	Boom Placer Operator	01 Nos	Plant & Machinery	
28	Boom Placer Helper	02 Nos	Plant & Machinery	
29	Hydra Operator	04 Nos	Plant & Machinery	
30	Mechanic Helper	01 Nos	Plant & Machinery	
31	Tyre Fitter Helper	01 Nos	Plant & Machinery	
32	Lmv Driver	10 Nos	Plant & Machinery	
33	Hmv Driver	70 Nos	Plant & Machinery	
34	Welder	03 Nos	Plant & Machinery	
35	Mechanic	04 Nos	Plant & Machinery	
36	Astt Mechanic	03 Nos	Plant & Machinery	

<b>SR NO.</b>	<b>EMPLOYEES NAME</b>	<b>DESIGNATION</b>	<b>DEPARTMENT</b>	<b>REMARKS</b>
37	Grease Man	01 Nos	Plant & Machinery	
38	Kabani Fitter	01 Nos	Plant & Machinery	
39	Tyre Fitter	01 Nos	Plant & Machinery	
40	Electrician	01 Nos	Plant & Machinery	
41	Auto Electrician	01 Nos	Plant & Machinery	
42	Supervisor	08 Nos	Plant & Machinery	

# Permission & Approvals

## STATUS OF PERMISSION AND APPROVALS AS PER SCHEDULE -E

Sr. No.		Actual Status
<b>1</b>	<b>State Government Permits (Quarrying Permits)</b>	
i	Permission of the State Government for Extraction of boulder from quarry	Obtained
ii	Permission of Village Panchayat & Pollution Control Board for installation of crusher	Obtained
iii	Permission of the State Government for drawing water from river/reservoir	Obtained
iv	Any other permits or clearances required under Applicable Laws	Obtained
<b>2</b>	<b>Labour License</b>	Obtained
<b>3</b>	<b>Forest</b>	Obtained.
i	4.74 Ha final approval Stage-II received on 26.09.2018	Obtained.
<b>4</b>	<b>ROB's / RUB's GAD</b>	
i	Km 83+515 ROB GAD approval from WCR	Obtained.
ii	Km. 80+905 RUB GAD approval from WCR	Pending

## Status of Design & Drawing

A- HIGHWAY							
SR. NO.	DESCRIPTION	TOTAL	SUBMITTED	BALANCE TO SUBMIT	APPROVED	BALANCE TO APPROVED	REMARKS
		(KM.)	(KM.)	(KM.)	(KM.)	(KM.)	
1	Plan & Profile of Main Carriageway (Km. 73.750 to Km. 102.000)	28.250	28.250	0.000	28.250	0.000	
2	Plan & Profile of Service/Slip Road (Km. 73.750 to Km. 102.000)	10.615	10.615	0	10.615	0	
3	Plan & Profile of line drain (Km. 73.750 to Km. 102.000)	12.805	12.805	0	-	12.805	
4	Plan & Profile of Forest section (Km. 0.000 to Km. 3.385)	3.385	3.385	0	-	3.385	
5	RE Wall Design & Drawings	14 Nos	11	3	3	8	
B- STRUCTURES							
SR. NO.	DESCRIPTION	TOTAL	SUBMITTED	BALANCE TO SUBMIT	APPROVED	BALANCE TO APPROVED	REMARKS
		(NOS)	(NOS)	(NOS)	(NOS)	(NOS)	
1	Pipe Culvert	29	27	2	27	2	
2	Box Culvert	28	26	2	14	14	
3	LVUP	6	6	0	6	0	
4	VUP	5	4	1	0	5	
5	VOP	1	1	0	0	1	
6	MNB	8	8	0	5	3	
7	MJB	4	3	1	0	4	
8	FLYOVER	2	2	0	0	2	
9	RUB	1	1	0	0	1	
10	ROB	1	1	0	0	1	
<b>TOTAL</b>		<b>85</b>	<b>79</b>	<b>6</b>	<b>52</b>	<b>33</b>	

- Note :-
1. Change in Alignment at Forest Section from Km. 83+979 to Km. 86+240 Revised Alignment P&P Submit to Review.
  2. Realignment COS has been already approved by NHAI.

Strip Plan :- Budhni - Shahganj Highways Pvt Ltd

Project Starting Ch. 73+750  
 Project Ending Ch. 102+000  
 Ch. Interval 100

Date  
 30-03-2026

LHS_RCC Drain		LHS	Drain																																																																													
LHS-Service Road Const.		LHS	SR																																																																													
LHS-MCW Construction	BC	LHS	MCW																																																																													
	DBM	LHS	MCW																																																																													
	WMM With Geogrid	LHS	MCW																																																																													
	CTSB	LHS	MCW																																																																													
	Sub-Grade	LHS	MCW																																																																													
	EMB. Top	LHS	MCW																																																																													
	C&G	LHS	MCW																																																																													
LHS-MCW Workfront	Workfront Available	LHS	MCW																																																																													
Chainage				73+750	73+800	73+900	74+000	74+100	74+200	74+300	74+400	74+500	74+600	74+700	74+800	74+900	75+000	75+100	75+200	75+300	75+400	75+500	75+600	75+700	75+800	75+900	76+000	76+100	76+200	76+300	76+400	76+500	76+600	76+700	76+800	76+900	77+000	77+100	77+200	77+300	77+400	77+500	77+600	77+700	77+800	77+900	78+000	78+100	78+200	78+300	78+400	78+500	78+600	78+700	78+800	78+900	79+000	79+100	79+200	79+300	79+400	79+500	79+600	79+700	79+800	79+900	80+000													
RHS-MCW Workfront	Workfront Available	RHS	MCW																																																																													
RHS-MCW Construction	C&G	RHS	MCW																																																																													
	EMB. Top	RHS	MCW																																																																													
	Sub-Grade	RHS	MCW																																																																													
	CTSB	RHS	MCW																																																																													
	WMM With Geogrid	RHS	MCW																																																																													
	DBM	RHS	MCW																																																																													
	BC	RHS	MCW																																																																													
RHS-Service Road Const.		RHS	SR																																																																													
RHS_RCC Drain		RHS	Drain																																																																													
RE Wall		BHS																																																																														
Status of Structures																																																																																
Structure Chainage				74+647	74+820	74+980																									75+275	75+426	75+435															76+200	76+500	76+600	76+880					77+140	77+450											78+118	78+630							79+200	79+450	79+520	79+680	79+882
Types of Structures				VUP	MNB	Box Culvert																									HPC	LVUP	HPC															Box Culvert	HPC	HPC	HPC					HPC	MJB											MNB	HPC							HPC	Box Culvert	Box Culvert	Box Culvert	MNB

Legends	
Not Started (Blank)	
Work In Progress (WIP)	Yellow
Completed (COM)	Green
Workfront Available (WA)	Blue
Workfront Unavailable (WUA)	Red

Strip Plan :- Budhni - Shahganj Highways Pvt Ltd

Project Starting Ch. 73+750  
 Project Ending Ch. 102+000  
 Ch. Interval 100  
 Date 30-03-2026

LHS_RCC Drain		LHS	Drain																																																																
LHS-Service Road Const.		LHS	SR																																																																
LHS-MCW Construction	BC	LHS	MCW																																																																
	DBM	LHS	MCW																																																																
	WMM With Geogrid	LHS	MCW																																																																
	CTSB	LHS	MCW																																																																
	Sub-Grade	LHS	MCW																																																																
	EMB. Top	LHS	MCW																																																																
	C&G	LHS	MCW																																																																
LHS-MCW Workfront	Workfront Available	LHS	MCW	Forest from Km. 83+979 to Km. 86+240																																																															
Chainage				80+100	80+200	80+300	80+400	80+500	80+600	80+700	80+800	80+900	81+000	81+100	81+200	81+300	81+400	81+500	81+600	81+700	81+800	81+900	82+000	82+100	82+200	82+300	82+400	82+500	82+600	82+700	82+800	82+900	83+000	83+100	83+200	83+300	83+400	83+500	83+600	83+700	83+800	83+900	84+000	84+100	84+200	84+300	84+400	84+500	84+600	84+700	84+800	84+900	85+000	85+100	85+200	85+300	85+400	85+500	85+600	85+700	85+800	85+900	86+000	86+100	86+200	86+300	86+400
RHS-MCW Workfront	Workfront Available	RHS	MCW	Forest from Km. 83+979 to Km. 86+240																																																															
RHS-MCW Construction	C&G	RHS	MCW																																																																
	EMB. Top	RHS	MCW																																																																
	Sub-Grade	RHS	MCW																																																																
	CTSB	RHS	MCW																																																																
	WMM With Geogrid	RHS	MCW																																																																
	DBM	RHS	MCW																																																																
	BC	RHS	MCW																																																																
RHS-Service Road Const.		RHS	SR																																																																
RHS_RCC Drain		RHS	Drain																																																																
RE Wall		BHS																																																																	
Status of Structures																																																																			
Structure Chainage				80+300	80+372	80+580	80+690	80+905	81+285	81+412	81+555	81+720	81+900	82+200	82+530	83+295	83+515	83+650	83+775	83+960	84+100	84+500	85+000	85+320	86+030	86+250																																									
Types of Structures				Box Culvert	LVUP	Box Culvert	Box Culvert	RUB	Box Culvert	HPC	Box Culvert	HPC	HPC	Box Culvert	Box Culvert	Box Culvert	ROB	HPC	Flyover	Box Culvert	Box Culvert	HPC	HPC	MJB	Box Culvert	Box Culvert																																									

Legends	
Not Started (Blank)	
Work In Progress (WIP)	
Completed (COM)	
Workfront Available (WA)	
Workfront Unavailable (WUA)	







## **SAFETY & HEALTH**

- ➔ Safety Officers along with supporting staff are deployed at Site to take care of safety aspects and Traffic Management.
- ➔ Safety & Traffic Management Systems implemented at locations wherever work is in progress as per the Safety & Traffic Management plan submitted to your office vide our letter no. **BSHPL/NHAI/FY24-25/145 dated 29.10.2025.** and Approved vide your letter no. **SAPL/TL/2025-26/386 dated 06.11.2025.** Further, utmost care will be taken for safety of the work force as well as road users while carrying out the various activities.
- ➔ All Culverts yet to be start.
- ➔ Road work under execution are barricaded with sand bags by sticking radium tape along the stretch for effective night vision.
- ➔ Identification of activity based PPE requirement and provided to all workman and enforced to use it, like Nose Mask, Spectacles, Gum boots, Hard Hat, fluorescent jackets, safety belts, safety shoes etc.
- ➔ Provision of water tankers for sprinkling water to dust control in/along works on the highway, access road, plants site and sprinkling system at crusher sites etc.
- ➔ All VUP's & Minor Bridges under construction is barricaded with hard board, Warning boards & Sign board, delineators & Safety tape, as applicable.
- ➔ Over all housekeeping in the camp and plant site.
- ➔ The awareness/training program on HSE for workers is being conducted periodically like-fire safety/flagmen/safe driving training etc. and tool box talk conducted at site on regular basis by the HSE team.
- ➔ All the structural work/form work/scaffolding taken up as per approved drawing and methodology will be assured by concerned Engineers.
- ➔ First Aid Box in available at Camp office & plants.
- ➔ All speed breakers have been painted with white strip for night visibility.
- ➔ Bushes are removed from the shoulders side to enhance better visibility wherever is required.
- ➔ Safety Officer : - To be Apointed
- ➔ Safety Supervisor for Site.
- ➔ Use of Safety Jackets & Helmets will be in Routine process of Execution.
- ➔ Contractor will conduct/celebrate special safety week. The follwing activity will be carried out during road safety days.
- ★ Road safety awareness programme at important location like Gram Panchayat within 2 Kms from Project Highway, all major junctions/Intersections, Bus Stand and Urban Areas, using mobile van with audio and visual effect will be conducted regularly.
- ★ Distribution of pamphlets etc to road users, all Police Station, Petrol Pumps, School and at Location where awareness programme will be conducted.
- ★ Display of "Flexi Road Sinages" banner at various prominent locations.
- ★ In house training & awareness programme at our camp for all Drivers and Operators.
- ★ Distribution of Book on Road Safety Signage & Signs (Issued by MoRTH),and Manual of Roads Safety Education to District Administrative/Police Officers.
- ➔ Vents of All Existing and Newly Constructed Structures will be opened.
- ➔ Special attentention is being given for Cross drainage as well as Longitudinal drainage on the Project Highway during Monsoon.

## **QUALITY**

EPC Contractor has established a full fledged laboratory within the site office premises at the Following Locations:-

1. Camp-2 @ Km. 75+400 LHS

All required tests related to execution of various activities in Highway & Structure works as per frequencies and requirements of the IRC codal provisions are being carried out. In-house Team of EPC Contractor is conducting the tests independently to ensure quality.

The details of tests carried out are given in **Annexure-1**.

Weather report for the month is given in **Annexure-2**.

**CONSTRUCTION OF 4-LANING OF BUDHNI TO SHAHGANJ BYPASS END (PACKAGE-III) OF NH-146B FROM DESIGN KM 73+750 TO DESIGN KM102+000 (DESIGN LENGTH 28.250 KM) UNDER NH(O) IN THE STATE OF MADHYA PRADESH ON HYBRID ANNUITY MODE**



CLIENT : NATIONAL HIGHWAYS AUTHORITY OF INDIA  
 CONCESSIONAIRE : BUDHNI SHAHGANJ HIGHWAYS PRIVATE LIMITED  
 INDEPENDENT ENGINEER : SAPTAGON ASIA PVT. LTD  
 EPC CONTRACTOR : MCC INFRA TECH PRIVATE LIMITED

**MONTHLY PROGRESS REPORT FOR THE MONTH OF MARCH 2026 PACKAGE-III**

SL NO	DESCRIPTION	TYPE OF TEST	FREQUENCY OF TESTING	Total Tests Conducted Upto Previous Month			No. of tests required	No. of Tests Conducted during this Month			No. of Tests Conducted upto this Month			Test Witnessed by IE/NHAI Rep.			REMARKS
				Tested	Passed	Failed		Tested	Passed	Failed	Tested	Passed	Failed	Upto previous month	During this month	Total	
1	OGL	Grain Size Analysis	1 Tests/ 250 Rm	104	104	0			0	104	104	0	36		36		
		Proctor	1 Tests/ 250 Rm	104	104	0			0	104	104	0	36		36		
		Atterberg Limits	1 Tests/ 250 Rm	104	104	0			0	104	104	0	36		36		
		Free Swell Index	1 Tests/ 250 Rm	104	104	0			0	104	104	0	36		36		
		CBR	As required	6	6	0			0	6	6	0	3	0	3		
	Field Density	10 Density measurement/ 3000 m <sup>2</sup>	5173	5154	59				5173	5154	59	1180		1180			
2	BORROW AREA MATERIAL	Grain Size Analysis	2 Tests/ 3000 m <sup>3</sup>	566	566	0	200	200	200	766	766	0	129	20	149		
		Proctor	2 Tests/ 3000 m <sup>3</sup>	566	566	0	200	200	200	766	766	0	129	20	149		
		Atterberg Limits	2 Tests/ 3000 m <sup>3</sup>	566	566	0	200	200	200	766	766	0	129	20	149		
		Free Swell Index	2 Tests/ 3000 m <sup>3</sup>	566	566	0	200	200	200	766	766	0	129	20	149		
		CBR	1 Test/3000 m <sup>3</sup>	302	302	0	100	100	100	402	402	0	68	10	78		
3	FIELD DRY DENSITY (FDD) TEST	Embankment	10 Density measurement/ 3000 m <sup>2</sup>	10845	10784	121	1480	1480	1480	12325	12264	121	2207.2	148	2355		
		Subgrade layer	10 Density measurement/ 2000 m <sup>2</sup>	1850	1830	40	380	380	370	10	2230	2200	50	300	38	338	
		Shoulder	10 Density measurement/ 2000 m <sup>2</sup>														
4	GRANULAR SUBBASE [ G.S.B ]	Gradation	1 Test/ 400 m <sup>3</sup>	14	14					14	14		4		4		
		Atterberg's Limits	1 Test/ 400 m <sup>3</sup>	14	14					14	14		4		4		
		Proctor	As required														
		CBR	As required														
		Field Density	1 Test/ 1000 m <sup>2</sup>	280	275	5					280	275	5	60		60	
4	CEMENT TREATED SUB BASE [ CTSB ]	Gradation	1 Test/ 400 cum of mix	46	46		38	38	38	84	84		7	6	13		
		Atterberg's Limits	1 Test/ 400 cum of mix	46	46		38	38	38	84	84		7	6	13		
		Proctor	As required														
		AIV	As required	12	12		5	5	5	17	17		2	1	3		
		07 Days Unconfined Compressive Strength (UCS)	1 Test of 3 Specimens 400 tonnes of mix (2 test per Day.)	96	96		40	40	40	136	136		14	6	20		
		Field Density	1 Specimens of 2 Test/ 500 sq.m	254	247	5	306	306	302	4	560	549	9	38	46	84	
4	CEMENT TREATED BASE [ CTB ]	Gradation	1 Test/ 400 cum of mix														
		Atterberg's Limits	1 Test/ 400 cum of mix														
		Proctor	As required														
		AIV	As required														
		07 Days Unconfined Compressive Strength (UCS)	1 Test of 3 Specimens 400 tonnes of mix (2 test per Day.)														
		07 Days Flexural Strength	1 Test of 3 Specimens 400 tonnes of mix (2 test per Day.)														
		Field Density	1 Specimens of 2 Test/ 500 sq.m														
	Gradation of Mix Agg.	1 Test/ 200 m <sup>3</sup>															

**MONTHLY PROGRESS REPORT FOR THE MONTH OF MARCH 2026 PACKAGE-III**

SL NO	DESCRIPTION	TYPE OF TEST	FREQUENCY OF TESTING	Total Tests Conducted Upto Previous Month			No. of tests required	No. of Tests Conducted during this Month			No. of Tests Conducted upto this Month			Test Witnessed by IE/NHAI Rep.			REMARKS	
				Tested	Passed	Failed		Tested	Passed	Failed	Tested	Passed	Failed	Upto previous month	During this month	Total		
	<b>AGGREGATE INTER LAYER [ AIL ]</b>	Atterberg's Limits	1 Test/ 200 m <sup>3</sup>															
		Proctor	As required															
		AIV Test	1 Test/ 1000 m <sup>3</sup>															
		Fl & El Test	1 Test/ 500 m <sup>3</sup>															
		Field Density	1 Set of 3 Test/ 1000 m <sup>2</sup>															
5	<b>WET MIX MACADAM [ W.M.M ]</b>	Gradation of Mix Agg.	1 Test/ 200 m <sup>3</sup>	3	3		93	93	93		96	96		2	14	16		
		Atterberg's Limits	1 Test/ 200 m <sup>3</sup>	11	11		93	93	93		104	104		2	14	16		
		Proctor	As required															
		AIV Test	1 Test/ 1000 m <sup>3</sup>	5	5		42	42	42		47	47		1	13	14		
		Fl & El Test	1 Test/ 500 m <sup>3</sup>	5	5		42	42	42		47	47		1	13	14		
		Field Density	1 Set of 3 Test/ 1000 m <sup>2</sup>	48	46	2	354	354	348	6	402	394	8	6	35	41		
6	<b>PRIME /TACK COAT</b>	Quality of binder	2 Samples / lot															
		Binder Temperature	At Regular intervals															
		Rate of Spread of Binder	3 Tests/ Day				15	15	15		15	15			3	3		
7	<b>BITUMEN</b>	Specific Gravity 27°C	1 tests/Lot				1	1	1		1	1			1	1		
		Softening Point	1 tests/Lot				4	4	4		4	4			1	1		
		Penetration at 25°C 100gm 5 Sec	1 tests/Lot				4	4	4		4	4			1	1		
		Ductility at 27°C	1 tests/Lot				4	4	4		4	4			1	1		
		Kinematic Viscosity at 135°C (CST)	1 tests/Lot				4	4	4		4	4			1	1		
		Absolute Viscosity at 60°C (POISES)	1 tests/Lot				4	4	4		4	4			1	1		
		Solubility	1 tests/Lot				4	4	4		4	4			1	1		
8	<b>DENSE BITUMINOUS MACADAM [D.B.M]</b>	Binder Content & Gradation	1 test / 400 MT Mix				10	10	10		10	10			4	4		
		Combined Gradation	1 test / 400 MT Mix				10	10	10		10	10			1	1		
		Individual Gradation	1 test / 400 MT Mix				10	10	10		10	10			1	1		
		Marshall Test (in Sets)	1set/ 400 MT Mix				10	10	10		10	10			1	1		
		Maximum Sp.Gr.	1set/ 400 MT Mix				10	10	10		10	10			1	1		
		A.I.V	1 test / 350 m <sup>3</sup> of Agg.				5	5	5		5	5			2	2		
		Fl & El	1 test / 350 m <sup>3</sup> of Agg.				5	5	5		5	5			0.5	0.5		
		Water Absorption & Specific Gravity	Test/Source				1	1	1		1	1			1	1		
		L.A.V.	Test/Source				1	1	1		1	1			1	1		
Density of Core	1Test/ 700 m <sup>2</sup>				27	27	27		27	27			14	14				

**MONTHLY PROGRESS REPORT FOR THE MONTH OF MARCH 2026 PACKAGE-III**

SL NO	DESCRIPTION	TYPE OF TEST	FREQUENCY OF TESTING	Total Tests Conducted Upto Previous Month			No. of tests required	No. of Tests Conducted during this Month			No. of Tests Conducted upto this Month			Test Witnessed by IE/NHAI Rep.			REMARKS	
				Tested	Passed	Failed		Tested	Passed	Failed	Tested	Passed	Failed	Upto previous month	During this month	Total		
9	<b>BITUMINOUS CONCRETE [ B.C]</b>	Marshall Test (in Sets)	1set/ 400 MTMix															
		A.I.V	1 test / 350 m3 of Agg.															
		FI & EI	1 test / 350 m3 of Agg.															
		Water Absorption & Specific Gravity	Test/Source															
		L.A.V.	Test/Source															
		Density of Core	1Test/ 700 m <sup>2</sup>															
<b>COMPRESSIVE STRENGTH -</b>																		
10	<b>CONCRETE</b>	<b>M -10 GRADE PCC</b>																
		07 Days	As per MoRT&H	94	94	0	9	9	9		103	103		28	1	29		
		28 Days		165	165	0	23	23	23		188	188		36	3	39		
		<b>M -15 GRADE PCC</b>																
		07 Days	As per MoRT&H	208	208	0	72	72	72		280	280		54	11	65		
		28 Days		294	294	0	84	84	84		378	378		76.1	13	89		
		<b>M -20 GRADE RCC</b>																
		07 Days	As per MoRT&H	122	122	0	19	19	19		141	141		34	3	37		
		28 days		143	143	0	41	41	41		184	184		38	6	44		
		<b>M -20 GRADE (KERB)</b>																
		07 Days	As per MoRT&H															
		28 Days																
		<b>M -25 GRADE RCC</b>																
		07 Days	As per MoRT&H	102	102	0	69	69	69		171	171		31	10	41		
		28 Days		51	51	0	210	210	210		261	261		23	32	54		
		<b>M -30 GRADE RCC &amp; Precast</b>																
		07 Days	As per MoRT&H	192	192	0	41	41	41		233	233		48	6	55		
28 Days	424	424		0	119	119	119		543	543		94	18	112				
<b>M -35 GRADE RCC &amp; Precast</b>																		
07 Days	As per MoRT&H	341	341	0	45	45	45		386	386		72	7	79				
28 Days		665	665	0	130	130	130		795	795		138	20	157				
<b>M -35 GRADE RE Block</b>																		
07 Days	As per MoRT&H	163	163	0					163	163		44		44				
28 Days		370	370	0					370	370		90		90				
<b>M -40 GRADE RCC</b>																		
07 Days	As per MoRT&H	100	100	0	9	9	9		109	109		27	2	29				
28 Days		290	290	0	4	4	4		294	294		64	1	65				
<b>M -45 GRADE RCC</b>																		
07 Days	As per MoRT&H																	
28 Days																		
<b>M -50 GRADE RCC</b>																		
07 Days	As per MoRT&H	7	7		17	17	17		24	24		1	3	4				
28 Days		3	3		16	16	16		19	19		1	3	4				

**MONTHLY PROGRESS REPORT FOR THE MONTH OF MARCH 2026 PACKAGE-III**

SL NO	DESCRIPTION	TYPE OF TEST	FREQUENCY OF TESTING	Total Tests Conducted Upto Previous Month			No. of tests required	No. of Tests Conducted during this Month			No. of Tests Conducted upto this Month			Test Witnessed by IE/NHAI Rep.			REMARKS	
				Tested	Passed	Failed		Tested	Passed	Failed	Tested	Passed	Failed	Upto previous month	During this month	Total		
11	DLC	07 Days	One set / 1000 Sqm	10	10					10	10		10		10			
		Field Density	3 Density Holes/2000 Sqm															
12	PQC	<b>M -40 GRADE</b>																
		Cubes	07 Days	As per MoRT&H	15	15						15	15		15		15	
			28 Days															
		Beams	07 Days		15	15						15	15		15		15	
	28 Days																	
13	CEMENT	Consistency	1 Test / week/Source	29	29	0					29	29		9		9		
		Initial and Final Setting Time	1 Test / week/Source	25	25	0					25	25		9		9		
		Specific Gravity	As & when Required															
		Soundness	1 Test / week/Source	29	29	0					29	29		8		8		
		Finness	1 Test / week/Source	29	29	0					29	29		8		8		
		Compressive Strength	1 Test / week/Source	85	85						85	85		22		22		
14	CEMENT GROUT	Compressive Strength	1 Set / Day/Girder	18	18					18	18		4		4			
16	WATER	Water Tests	Every 3 month	2	2					2	2		6	2	8			
17	STEEL	32mm dia.	Min 2 Samples / 100 MT	1	1					1	1		1		1			
		25 mm dia.	Min 2 Samples / 100 MT	1	1					1	1		1		1			
		20 mm dia.	Min 2 Samples / 100 MT	1	1					1	1		1		1			
		16 mm dia.	Min 2 Samples / 100 MT	1	1					1	1		1		1			
		12 mm dia.	Min 2 Samples / 100 MT	1	1					1	1		1		1			
		10 mm dia	Min 2 Samples / 100 MT	1	1					1	1		1		1			
		8 mm dia	Min 2 Samples / 100 MT	1	1					1	1		1		1			
		Structural Steel	Each and every Lot															
HT Strands	1 Test /Each Coil/Lot																	
18	FINE AGGREGATE	Sieve Analysis	1 Test/day/plant/Source	276	276	0	30	30	30		306	306		78.2	5	83		
		Sp.Gravity & W.Absorption	As & when Required	1	1	0					1	1		1		1		
		Organic Impurities	As & when Required															
19	COARSE AGGREGATES	Sieve Analysis	1 Test/day/plant/Source	288	288	0	30	30	30		318	318		79.6	6	86		
		Sp.Gravity & W.Absorption	As & when Required	2	2	0					2	2		1		1		
		A I V Tests	1 Test/week/plant/Source	29	29	0	4	4	4		33	33		9	1	9		
		E.I & F.I Index	1 Test/fort night/plant	22	33	0	4	4	4		26	37		8	1	8		
20	CALIBRATION	Plant	Every 3 month	25	25	0	1	1	1		26	26		3	0	3		
		Lab. Equipments	As per Calibration Plan	35	35	0					35	35		47	8	55		

**Construction work of 4-laning of Budhni to Shahganj bypass end (Package-III) of NH-146B from design km 73.750 to design km 102.000 (Design Length 28.250 km) under NH(O) in the State of Madhya Pradesh on Hybrid Annuity Mode.**



CLIENT : NATIONAL HIGHWAYS AUTHORITY OF INDIA  
 CONCESSIONAIRE : BUDHNI SHAHGANJ HIGHWAY PRIVATE LIMITED  
 INDEPENDENT ENGINEER : SAPTAGON ASIA PVT. LTD.  
 EPC CONTRACTOR : MCC INFRA TECH PRIVATE LIMITED

**WEATHER RECORD FOR THE MONTH MARCH- 2026 Lab @ Ch-75+400 RHS**

SR. No	DATE	RAIN FALL IN (MM)	CUMM RAIN FALL IN (MM)	HUMIDITY (%)		TEMPRATURE °C		REMARKS
				Min (%)	Max (%)	8:00 AM		
						MIN	MAX	
1	01-Mar-26	0.0	0.0	21	68	18.9	30.6	
2	02-Mar-26	0.0	0.0	22	69	19.0	30.7	
3	03-Mar-26	0.0	0.0	21	69	18.8	30.8	
4	04-Mar-26	0.0	0.0	22	71	19.3	31.1	
5	05-Mar-26	0.0	0.0	22	70	19.1	30.8	
6	06-Mar-26	0.0	0.0	23	71	20.2	31.7	
7	07-Mar-26	0.0	0.0	24	71	18.9	32.5	
8	08-Mar-26	0.0	0.0	24	70	18.8	33.3	
9	09-Mar-26	0.0	0.0	23	70	18.8	34.6	
10	10-Mar-26	0.0	0.0	23	70	18.8	35.7	
11	11-Mar-26	0.0	0.0	22	71	18.9	36.0	
12	12-Mar-26	0.0	0.0	12	53	20.8	37.3	
13	13-Mar-26	0.0	0.0	13	52	20.4	36.9	
14	14-Mar-26	0.0	0.0	11	54	19.3	37.1	
15	15-Mar-26	0.0	0.0	12	53	19.5	37.0	
16	16-Mar-26	0.0	0.0	13	55	19.7	37.3	
17	17-Mar-26	0.0	0.0	14	57	19.3	37.4	
18	18-Mar-26	0.0	0.0	15	58	19.4	37.5	
19	19-Mar-26	0.0	0.0	16	58	19.1	37.2	
20	20-Mar-26	0.0	0.0	15	57	18.9	37.1	
21	21-Mar-26	0.0	0.0	14	56	18.8	37.4	
22	22-Mar-26	0.0	0.0	17	64	18.7	37.3	
23	23-Mar-26	0.0	0.0	15	61	18.5	37.8	
24	24-Mar-26	0.0	0.0	16	60	18.7	37.5	
25	25-Mar-26	0.0	0.0	15	60	19.3	37.4	
26	26-Mar-26	0.0	0.0	16	61	19.1	37.3	
27	27-Mar-26	0.0	0.0	16	60	20.1	37.5	
28	28-Mar-26	0.0	0.0	14	62	19.7	37.7	
29	29-Mar-26	0.0	0.0	15	53	19.9	37.7	
30	30-Mar-26	0.0	0.0	16	58	19.5	37.6	
30	31-Mar-26							

**CONSTRUCTION OF 4-LANING OF SHAHGANJ BYPASS END TO BADI (PACKAGE-IV) OF NH-146B FROM DESIGN KM 102+000 TO DESIGN KM142+357(DESIGN LENGTH 40.357 KM) UNDER NH(O) IN THE STATE OF MADHYA PRADESH ON HYBRID ANNUITY MODE**



CLIENT : NATIONAL HIGHWAYS AUTHORITY OF INDIA  
 CONCESSIONAIRE : SHAHGANJ BADI HIGHWAY PRIVATE LIMITED  
 INDEPENDENT ENGINEER : SAPTAGON ASIA PVT. LTD  
 EPC CONTRACTOR : MCC INFRA TECH PRIVATE LIMITED

**CALIBRATION PLAN @ Ch-74+400 LHS, BUDHNI CAMP**

S. No.	Description of Equipment/ Device	Equipment code/ Identification	Calibration Agency	Frequency of Calibration	Calibration Verifying Document	Date of Calibration	Next Due Date of Calibration	Remark
1	Digital Temperature Meter	BSHPL/MCC/DTM/1	Third Party	1 Year	Available in Records	15-10-2025	14-10-2026	
2	CTM Machine	BSHPL/MCC/CTM/1	Third Party	1 Year	Available in Records	15-10-2025	14-10-2026	
3	Weight machine 50Kg	BSHPL/MCC/WEB/1	Third Party	1 Year	Available in Records	15-10-2025	14-10-2026	
4	Sand Pouring Cylinder 100 mm Dia	BSHPL/MCC/SPC/1	In House	Three Month	Available in Records	09-01-2026	09-04-2026	
5	Sand Pouring Cylinder 200 mm Dia	BSHPL/MCC/SPC/1	In House	Three Month	Available in Records	09-01-2026	09-04-2026	
6	RMM	BSHPL/MCC/RMM/1	In House	Three Month	Available in Records	09-02-2026	08-05-2026	
7	Slump Cone	BSHPL/MCC/SC/1-2	In House	Six Month	Available in Records	05-01-2026	04-06-2026	
8	Aggregate Impact Value	BSHPL/MCC/SC/1-2	In House	Six Month	Available in Records	05-01-2026	04-06-2026	
9	Concrete Cube Mould	BSHPL/MCC/CCM/1-36	In House	Six Month	Available in Records	05-01-2026	04-06-2026	
10	Moisture Container	BSHPL/MC//1-298	In House	Three Month	Available in Records	17-02-2026	16-05-2026	
11	Weight machine 30Kg	BSHPL/MCC/WEB/1	Third Party	1 Year	Available in Records	15-10-2025	14-10-2026	
12	Weight machine 5Kg	BSHPL/MCC/WEB/1	Third Party	1 Year	Available in Records	15-10-2025	14-10-2026	
13	Hygrometer	BSHPL/MCC/HIGM/1	Third Party	1 Year	Available in Records	15-10-2025	14-10-2026	
14	IS Sieve 40 mm (450 mm Dia)	BSHPL/MCC/GIS/1	Third Party	1 Year	Available in Records	15-10-2025	14-10-2026	
15	IS Sieve 20 mm (450 mm Dia)	BSHPL/MCC/GIS/2	Third Party	1 Year	Available in Records	15-10-2025	14-10-2026	
16	IS Sieve 12.5 mm (450 mm Dia)	BSHPL/MCC/GIS/3	Third Party	1 Year	Available in Records	15-10-2025	14-10-2026	
17	IS Sieve 10 mm (450 mm Dia)	BSHPL/MCC/GIS/4	Third Party	1 Year	Available in Records	15-10-2025	14-10-2026	
18	IS Sieve 4.75 mm (450 mm Dia)	BSHPL/MCC/GIS/5	Third Party	1 Year	Available in Records	15-10-2025	14-10-2026	
19	IS Sieve 2.36 mm (450 mm Dia)	BSHPL/MCC/GIS/6	Third Party	1 Year	Available in Records	15-10-2025	14-10-2026	
20	IS Sieve 4.75 mm (300 mm Dia)	BSHPL/MCC/GIS/1	Third Party	1 Year	Available in Records	15-10-2025	14-10-2026	
21	IS Sieve 2.36 mm (200 mm Dia)	BSHPL/MCC/BIS/1	Third Party	1 Year	Available in Records	15-10-2025	14-10-2026	

**CALIBRATION PLAN @ Ch-74+400 LHS, BUDHNI CAMP**

S. No.	Description of Equipment/ Device	Equipment code/ Identification	Calibration Agency	Frequency of Calibration	Calibration Verifying Document	Date of Calibration	Next Due Date of Calibration	Remark
22	IS Sieve 1.18 mm (200 mm Dia)	BSHPL/MCC/BIS/2	Third Party	1 Year	Available in Records	15-10-2025	14-10-2026	
23	IS Sieve 600 Mic (200 mm Dia)	BSHPL/MCC/BIS/3	Third Party	1 Year	Available in Records	15-10-2025	14-10-2026	
24	IS Sieve 300 Mic (200 mm Dia)	BSHPL/MCC/BIS/4	Third Party	1 Year	Available in Records	15-10-2025	14-10-2026	
25	IS Sieve 150 Mic (200 mm Dia)	BSHPL/MCC/BIS/5	Third Party	1 Year	Available in Records	15-10-2025	14-10-2026	
26	IS Sieve 90 Mic (200 mm Dia)	BSHPL/MCC/BIS/6	Third Party	1 Year	Available in Records	15-10-2025	14-10-2026	
27	IS Sieve 45 Mic (200 mm Dia)	BSHPL/MCC/BIS/7	Third Party	1 Year	Available in Records	15-10-2025	14-10-2026	
28	IS Sieve 75 Mic (200 mm Dia)	BSHPL/MCC/BIS/8	Third Party	1 Year	Available in Records	15-10-2025	14-10-2026	
29	Hot Plate	BSHPL/MCC/HP/1	Third Party	1 Year	Available in Records	15-10-2025	14-10-2026	
30	FI & EI Gauge	BSHPL/MCC/FIEI/1	Third Party	1 Year	Available in Records	15-10-2025	14-10-2026	

Construction work of 4-laning of Budhni to Shahganj bypass end (Package-III) of NH-146B from design km 73.750 to design km 102.000 (Design Length 28.250 km) under NH(O) in the State of Madhya Pradesh on Hybrid Annuity Mode.



CLIENT	: NATIONAL HIGHWAYS AUTHORITY OF INDIA
CONCESSIONAIRE	: SHAHGANJ BADI HIGHWAY PRIVATE LIMITED
INDEPENDENT ENGINEER	: SAPTAGON ASIA PVT. LTD
EPC CONTRACTOR	: MCC INFRA TECH PRIVATE LIMITED

**LIST OF LAB EQUIPMENTS @ Ch-74+500 RHS, BUDHNI CAMP**

Sr. NO.	ITEM NAME	Total Available Qty	REMARK
1	GLOVES RUBBER	2	
2	GLOVES COTTON	2	
3	SPATULA	2	
4	ELECTRONIC BALANCE	1	
5	ELECTRONIC BALANCE	1	
6	ELECTRONIC BALANCE	1	
7	POURING CYLINDER (SMALL) FDD SET	1	
8	POURING CYLINDER (MEDIUM) FDD SET	1	
9	POURING CYLINDER (BIG) FDD SET	1	
10	POURING CYLINDER TRAY (SMALL) FDD	1	
11	POURING CYLINDER TRAY(MEDIUM) FDD	1	
12	POURING CYLINDER TRAY(BIG) FDD	1	
13	RMM	2	
14	CALCIUM CARBIDE FOR RMM	5	
15	DIGITAL THERMOMETER	1	
16	STOP WATCH	1	
17	HYGROMETER	1	
18	ENAMEL TRAY	2	
19	GI TRAY	4	
20	GI TRAY (MEDIUM SIZE)	2	
21	GI TRAY (SMALL SIZE)	2	
22	ENAMEL TRAY (SMALL SIZE)	2	
23	GI TRAY (SMALL SIZE)	2	
24	GI TRAY BIG	1	
25	ENAMEL CIRCULAR PLATE	2	
26	HOT PLATE	1	
27	FI GUAGE	1	
28	ELONGATION GUAGE	1	
29	CONCRETE CUBE MOULD	69	
30	SLUMP CONE WITH TEMPING RODS	3	
31	AIV APPRATUS WITH ALL ASSESORIES	1	
32	COMPRESSIVE STRENGTH TEST(CTM) DIGITAL	1	
33	RIFFLE BOX (SAMPLE DIVIDER)	1	
34	RIFFLE BOX (SAMPLE DIVIDER)	1	
35	RAIN GAUGE	1	
36	<b>SIEVE SIZE 450 mm dia</b>		
37	40mm	1	

Construction work of 4-laning of Budhni to Shahganj bypass end (Package-III) of NH-146B from design km 73.750 to design km 102.000 (Design Length 28.250 km) under NH(O) in the State of Madhya Pradesh on Hybrid Annuity Mode.



CLIENT	: NATIONAL HIGHWAYS AUTHORITY OF INDIA
CONCESSIONAIRE	: SHAHGANJ BADI HIGHWAY PRIVATE LIMITED
INDEPENDENT ENGINEER	: SAPTAGON ASIA PVT. LTD
EPC CONTRACTOR	: MCC INFRATECH PRIVATE LIMITED

**LIST OF LAB EQUIPMENTS @ Ch-74+500 RHS, BUDHNI CAMP**

Sr. NO.	ITEM NAME	Total Available Qty	REMARK
38	20mm	1	
39	12.5mm	1	
40	11.2mm	1	
41	10mm	1	
42	4.75mm	1	
43	2.36mm	1	
44	1.18 mm	1	
45	LID & PAN	1	
46	<b>SIEVE SIZE 200 mm dia Brass</b>		
47	4.75mm	1	
48	2.36mm	1	
49	1.18mm	1	
50	1.0 mm	1	
51	600mic	1	
52	425mic	1	
53	300mic	1	
54	150mic	1	
55	90mic	1	
56	75mic	1	
57	45mic	1	
58	LID & PAN	1	

# Change of Scope

Some additional structures / culverts / service roads etc have to be provided for which COS has been notified by Authority Engineer and detailed proposal is under process with the EPC Contractor.

COS No.	COS Proposal Details	Date of first Submission to the Authority	Current Status	COS Amount (INR Cr.)	Expected/ Actual Date of Approval
COS No.-1	<p>Additional work coming under Change of Scope intimated to NHAI &amp; IE vide Letter No. BSHPL/NHAI/FY24-25/160 dated 04<sup>th</sup> November 2025.</p> <p>The Change of Scope Works are summarized as below:</p> <ol style="list-style-type: none"> <li>1. Additional Box Culvert size From (1 X 2.00 X 2.3) @ Kms 74+900</li> <li>2. Additional MNB size From (1 X 7.00) @ Kms 75+020</li> <li>3. New Pipe Culvert @ KM 75+720 for Irrigation Canal Crossing</li> <li>4. Additional Box Culvert size From (1 X 2.00 X 2.3) @ Kms 77+300</li> <li>5. Additional Box Culvert size From (1 X 2.00 X 2.3) @ Kms 86+440</li> <li>6. 6nos Pipe Culvert @ Km at Canal Crossing in Various Locations 90+888, 92+136, 93+370, 75+416, 77+890, 77+910</li> <li>7. Increase in length due to realignment in forest Area</li> <li>8. Noise Barrier (19.6 Km length and 2 mtr. Height)</li> <li>9. PHED pipe line extra work as per Schedule-B Exclude GST 18% and Tender Premium</li> <li>10. Provide 300 mtr. Service Road in front of Sainik School</li> </ol>	04 <sup>th</sup> November 2025	<p>COS-I Submitted for In Principal approval vide letter No. BSHPL/NHAI/FY24-25/160 dated 04<sup>th</sup> November 2025</p> <p>Observations Raised by Independent Engineer vide letter no. SAPL/TL/2025-25/451 dated 11.12.2025</p> <p>Revised Submission by Concessionaire vide letter no. BSHPL/NHAI/25-26/231 dated 29.12.2025</p>	-	Under review in NHAI HQ

# Accident Report

Sr. No	Date	Chainage	Time of Accident	Sex (M/F)	A	B	C	D	E	F	G	H	I	J	K	No. of Effected Persons			Help provided by
					Accident Location	Nature of Accident	Classification of Accident	Causes	Load condition of vehicle	Road Condition	Intersection type of condition	Weather Condition	Age of victim	Type of Victim	Type of Vehicle	Fatal	Major	Minor	
1																			
2																			
3																			

**Project Work Photos & Work Zone Safety**

---

---

# **Annexure I**

# BUDHNI SHAHGANJ HIGHWAYS PVT. LTD.

LVUP at 75+435 completed



LVUP at 80+370 completed & RE Wall work in progress



**RE Wall work in progress**



# BUDHNI SHAHGANJ HIGHWAYS PVT. LTD.

## RE Wall Work in progress



## RE Wall Inspection at site by Project Director NHAI



# BUDHNI SHAHGANJ HIGHWAYS PVT. LTD.

WMM Work in progress



# BUDHNI SHAHGANJ HIGHWAYS PVT. LTD.

CTSB Work in progress



RE Wall Work in progress



# BUDHNI SHAHGANJ HIGHWAYS PVT. LTD.

## Pothholes Filling Work in Progress

